

# Ozone Monitoring Update

Tommy Flynn, Manager  
Air Data Analysis and Support  
Section

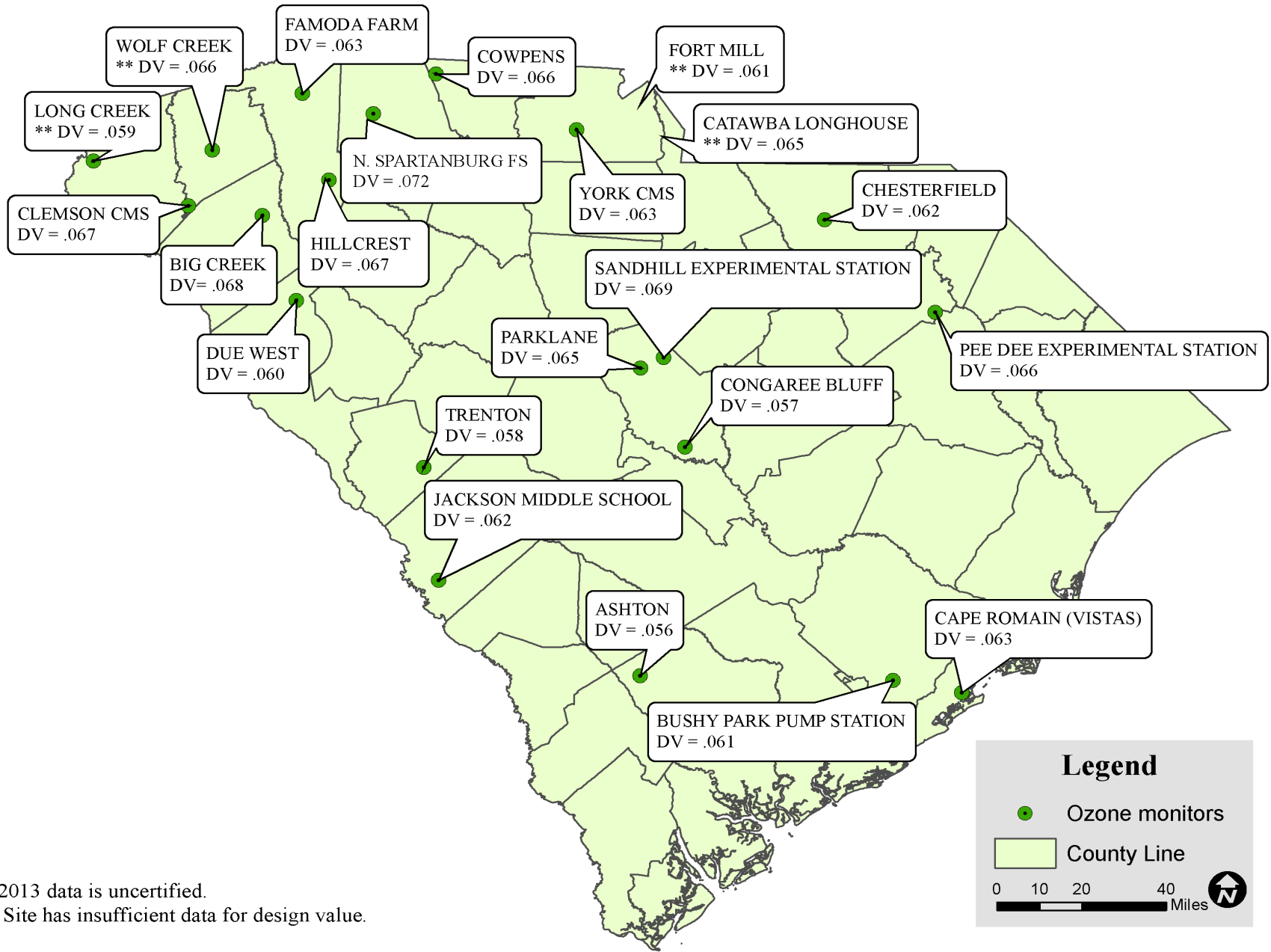
# Requirement for ozone monitoring

- Federal regulations require a minimum monitoring network to be established when either population or air quality concentrations exceed a certain threshold.
- These minimum monitoring requirements are applicable to each Metropolitan Statistical Area (MSA).
- In February, 2013, the US Census released new MSA definitions. In this release, Horry County, SC and Brunswick County, NC form the Myrtle Beach – Conway – North Myrtle Beach, SC-NC MSA.

# SC Ozone Design Values

- What is a design value (DV)?
  - The statistic that is used to compare monitoring data to the National Ambient Air Quality Standards.
  - In the case of ozone, the DV is the three year average of the annual 4<sup>th</sup> highest daily maximum 8-hour ozone concentration measured in an area (i.e., MSA or county)

# 2013 Ozone \*Design Values (ppm)



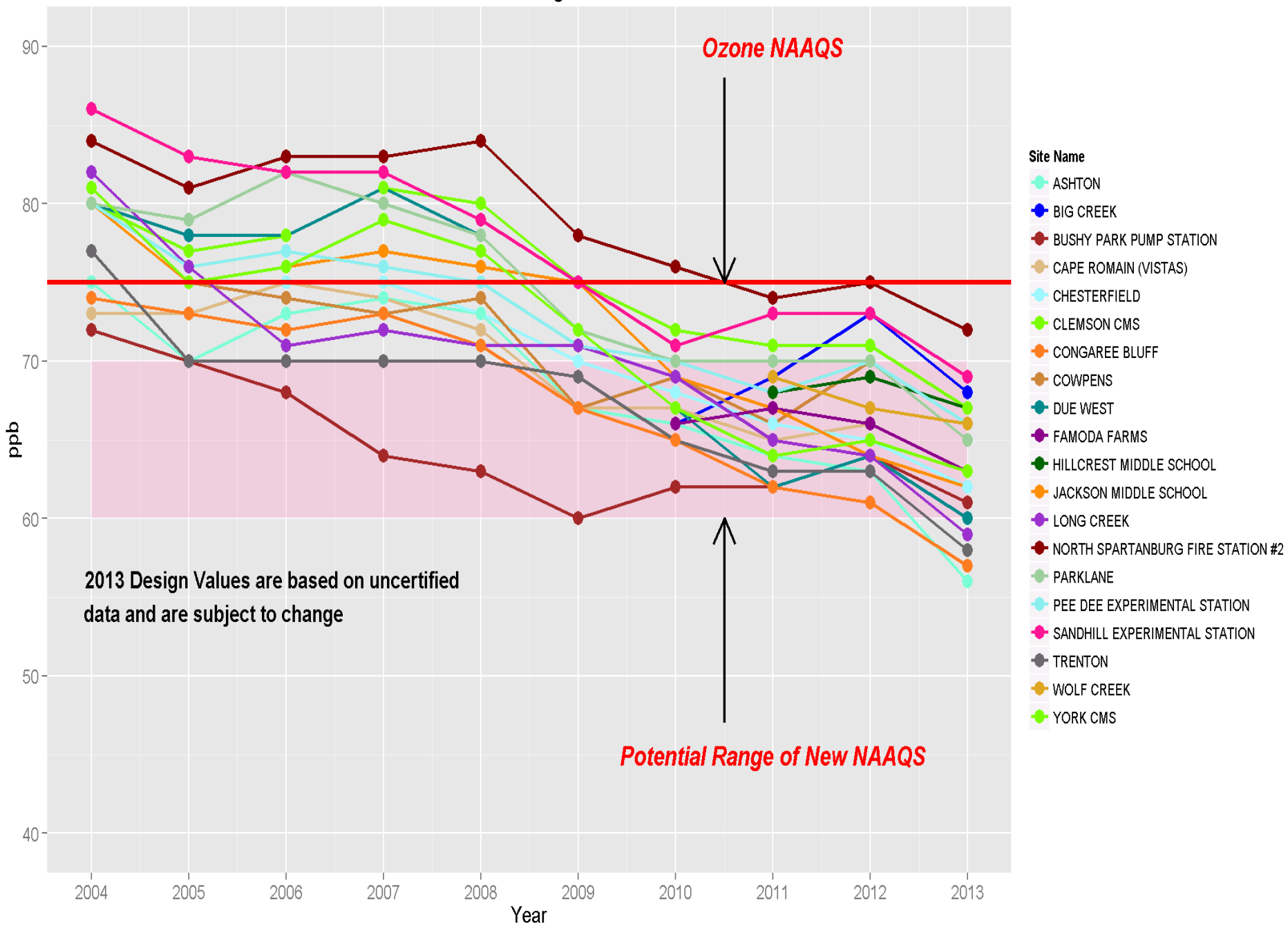
**Legend**

- Ozone monitors
- County Line

0 10 20 40 Miles

\* 2013 data is uncertified.  
 \*\* Site has insufficient data for design value.

# South Carolina Ozone Design Values 2004 - 2013



# Monitoring in Horry County

- Monitoring regulations require one ozone monitor in the MSA.
- This monitor is required to be in an area where we **expect** to see maximum ozone concentrations.
  - To determine we typically look at emission sources and wind patterns to identify areas that may have high ozone concentrations for the area.
- Had hoped to partner with NC to conduct an ozone monitoring study in the MSA, but each state will have an obligation to meet the monitoring requirements in the absence of a Memorandum of Agreement.

# Plans for ozone monitoring in Horry County

- Currently looking at a site on the campus of Coastal Carolina in conjunction with the College of Science.
- We are examining meteorological data (surface and upper air) from Coastal Carolina and evaluating the data internally to determine if the site might be a candidate site for the monitor required in an area of expected maximum ozone concentration.
- Still looking at other possible sites in Horry County.
- We hope to establish monitoring in March 2015.

# Monitoring Plan

- Required to be submitted annually (by July 1 of each year).
- Plan shows how the states meet the monitoring requirements in 40 CFR Part 58 (QA, Monitoring Methods, Network Design, and Probe Siting).
- DHEC provides for a 30-day public inspection and comment period.
- DHEC maintains a mailing list to notify interested persons about the availability of the monitoring plan. If interested send me an email (contact information on the next slide).



# Questions/Discussion

- Contact information:
  - Tommy Flynn
  - [flynntj@dhec.sc.gov](mailto:flynntj@dhec.sc.gov)
  - 803-898-3251